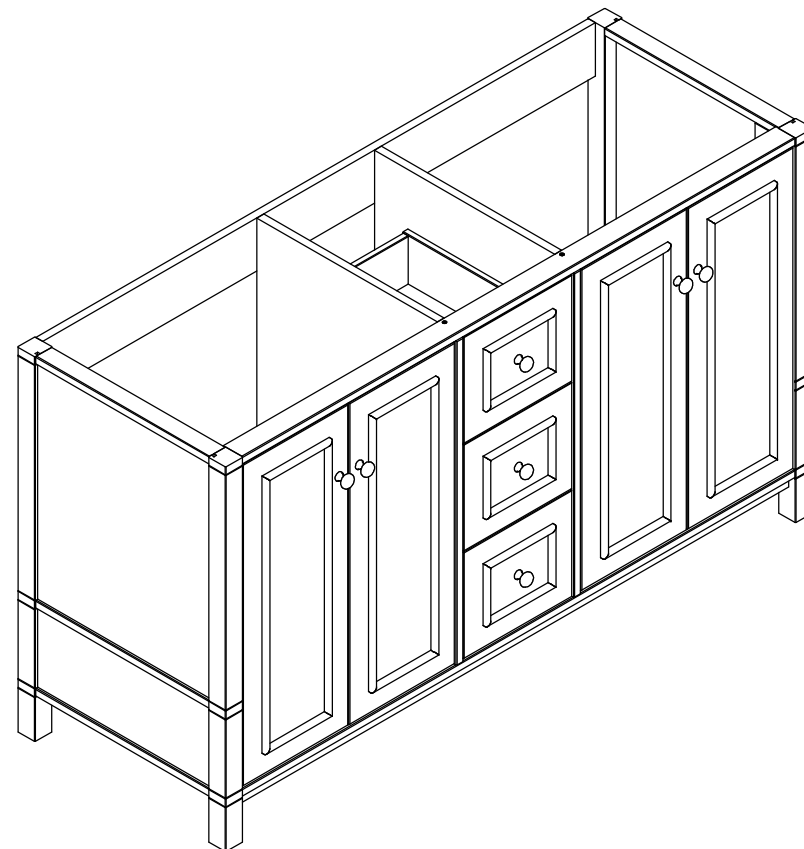


tresirmaos		Edição:	Data alteração:
Código / Produto: 218.012_Williamsburg_60"_Vanity		Material:	Data criação: 26/07/2020
Código / Peça : / movel montado		QTDE.	Desenho: Marcelo
Dimensões em (mm): x x	M ² :	M ³ :	Peso: N/A
			Página: 1

Lista de peças							
Item	Código	Peça	Quant.	Comp. (mm)	Larg. (mm)	Esp. (mm)	Material
1	218.012.10	lateral direita montada	1				
1.1	218.012.12	pe direito frontal	1	865,0	45,0	45,0	Pinus(Finger)
1.2	218.012.11	pe direito traseiro	1	865,0	45,0	45,0	Pinus(Finger)
1.3	218.009.09	Almofada lateral maior	1	462,0	541,0	6,0	MDF CRU
1.5	218.009.05	Travessa superior lateral	1	450,0	43,0	18,0	Pinus
1.9	218.012.04	Travessa central lateral	1	450,0	43,0	18,0	Pinus
1.10	218.009.08	Almofada lateral menor	1	462,0	190,0	6,0	MDF CRU
1.11	218.012.05	Travessa inferior lateral	1	450,0	43,0	18,0	Pinus
1.12	218.012.07	travessa menor interna lateral	1	179,0	60,0	18,0	Pinus
1.14	218.009.07	travessa interna dobradiça	1	530,0	60,0	18,0	Pinus
2	218.012.28	travessa frontal superior	1	1434,0	30,0	18,0	Pinus
3	218.012.01	lateral esquerda montada	1				
3.1	218.012.02	pe esquerdo frontal	1	865,0	45,0	45,0	Pinus(Finger)
3.2	218.012.03	pe esquerdo traseiro	1	865,0	45,0	45,0	Pinus(Finger)
3.3	218.009.09	Almofada lateral maior	1	462,0	541,0	6,0	MDF CRU
3.5	218.009.05	Travessa superior lateral	1	450,0	43,0	18,0	Pinus
3.9	218.012.04	Travessa central lateral	1	450,0	43,0	18,0	Pinus
3.10	218.009.08	Almofada lateral menor	1	462,0	190,0	6,0	MDF CRU
3.11	218.009.07	travessa interna dobradiça	1	530,0	60,0	18,0	Pinus
3.13	218.012.05	Travessa inferior lateral	1	450,0	43,0	18,0	Pinus
3.14	218.012.07	travessa menor interna lateral	1	179,0	60,0	18,0	Pinus
7	218.012.15	travessa superior traseira	2	1434,0	120,0	18,0	Pinus
23	218.012.14	Fundo	1	1434,0	527,0	18,0	MDF CRU
25	218.012.16	Travessa superior frontal	1	1434,0	50,0	18,0	Pinus
29	218.012.17	Porta esquerda montada	2				
29.1	218.012.18	Porta esquerda	1	723,0	274,0	15,0	MDF CRU
29.2	218.012.19	Aplique maior porta	2	623,0	12,0	12,0	Pinus
29.3	218.012.20	Aplique menor porta	2	174,0	12,0	12,0	Pinus
37	218.012.09	Divisão esquerda	1	747,0	518,0	18,0	Pinus(Finger)
39.1	218.009.22	Lateral Direita Gaveta	3	400,0	130,0	14,0	Pinus(Finger)
39.2	218.009.23	Lateral Esquerda Gaveta	3	800,0	300,0	18,0	Pinus(Finger)
39.3	218.011.24	Fundo de Gaveta	3	246,0	398,0	3,0	MDF CRU
39.4	218.011.21	Traseiro de gaveta	3	233,0	128,0	14,0	Pinus(Finger)
39.9	218.011.25	Frente montada	3				
39.9.1	218.011.26	Frente de Gaveta	1	281,0	239,0	15,0	MDF CRU
39.9.2	218.011.30	Aplique maior gaveta	2	181,0	12,0	12,0	Pinus
39.9.3	218.011.27	Aplique menor gaveta	2	139,0	12,0	12,0	Pinus
41	218.012.31	Divisão direita	1	747,0	518,0	18,0	Pinus(Finger)
42	218.012.21	Porta direita montada	2				
42.1	218.012.19	Aplique maior porta	2	623,0	12,0	12,0	Pinus
42.2	218.012.20	Aplique menor porta	2	174,0	12,0	12,0	Pinus
42.4	218.012.22	Porta direita	1	723,0	274,0	15,0	MDF CRU
43	218.012.23	Pé central	1	100,0	40,0	40,0	Pinus



tresirmaos		Edição:	Data alteração:
Código / Produto: 218.012_Williamsburg_60" _Vanity		Material:	Data criação: 26/07/2020
Código / Peça : / movel montado		QTDE.	Desenho: Marcelo
Dimensões em (mm): x x		M² :	M³ :
		Peso: N/A	Página: 2