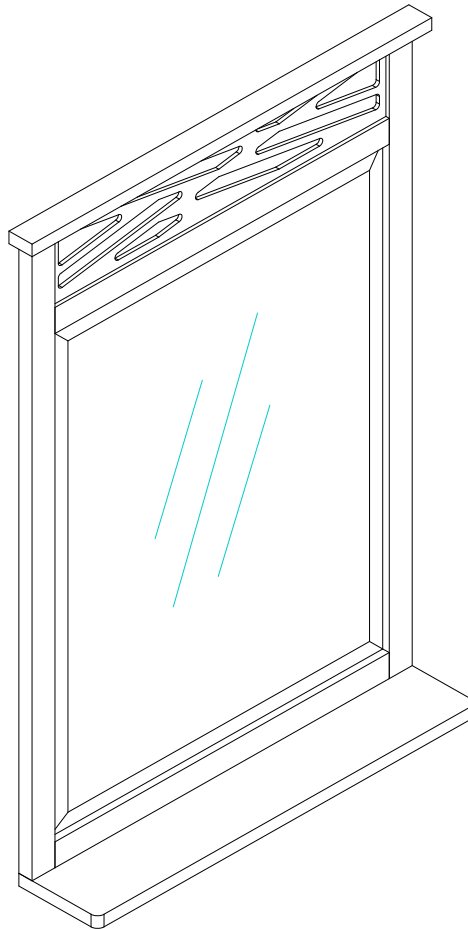


ASSEMBLY INSTRUCTIONS

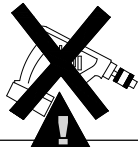
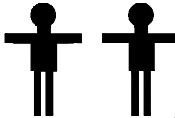


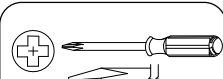

Bath Mirror



REPLACEMENT PARTS

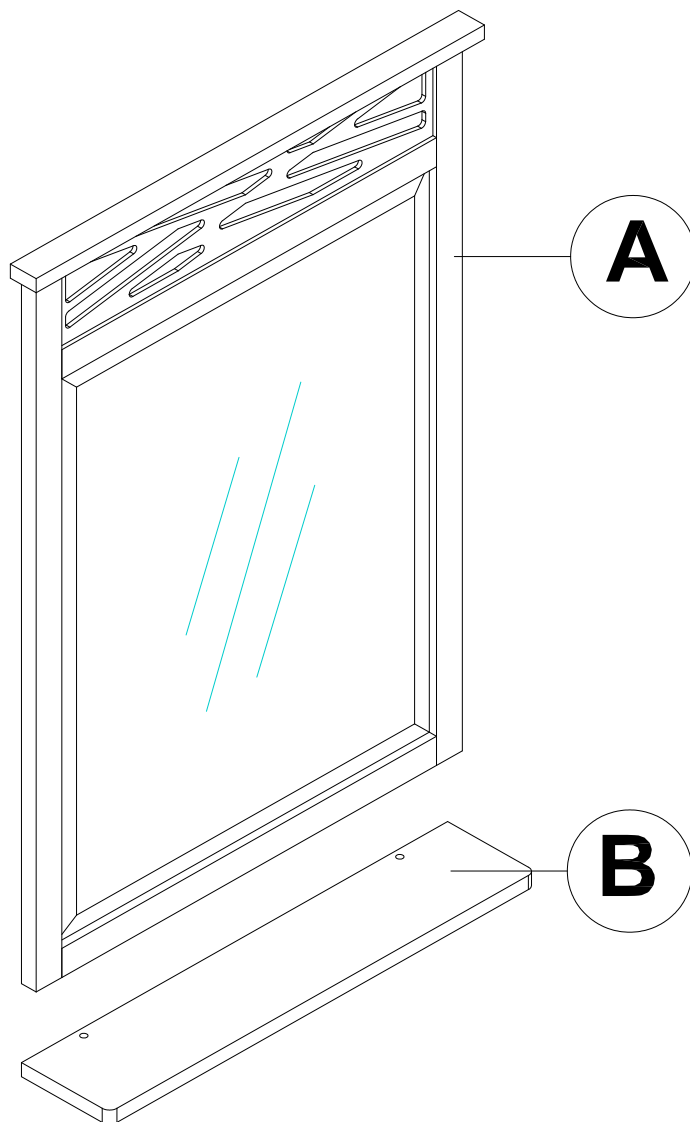
Please do not contact the company purchased from as we can help you faster.

Order replacement parts and hardware at "boltonfurniture.com"

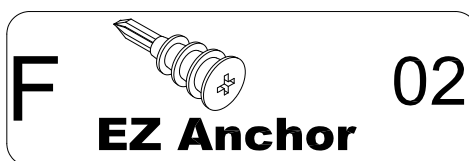
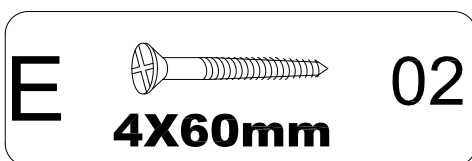
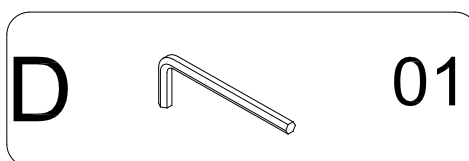
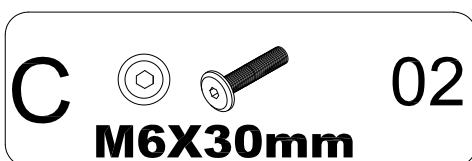
 <p>. Use of power tool to assemble this product will invalidate any claim and damage this product making it unsafe!!! . Please assemble on a clean soft surface to avoid damage.</p>	   50 minutes	<p><u>Tool Included</u></p>  <p>(Not included)</p> 
--	--	--

www.boltonfurniture.com

Part List-Bath Mirror

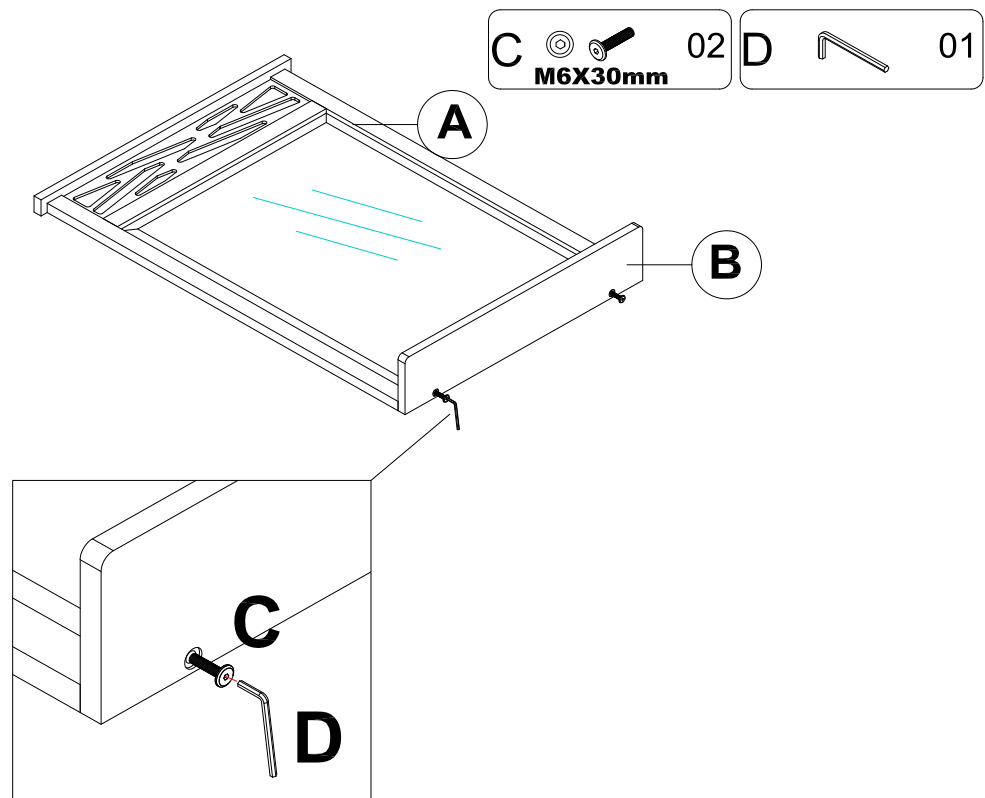


Identifying the hardware-Identify the hardware using the illustrations below.



www.boltonfurniture.com

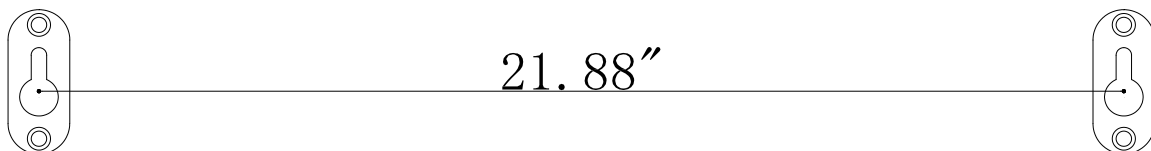
Step 1



Note: If possible, we recommend that when mounting the mirror that at least one screw is secured in to a stud.

Step 2

Measure the distance between the two key holes on back of shelf. Mark the location on the wall where the mirror will be hung.



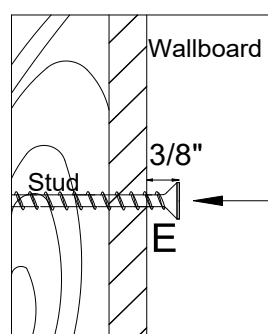
Step 3

Drill a 1/8" pilot hole 3/4" deep. This will mark the location for the screw that the mirror will hang from.

Step 4

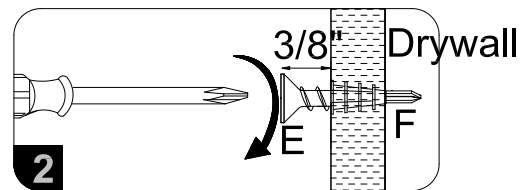
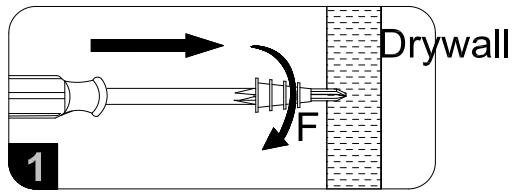
If hole location is aligned with a stud in wall, secure screw (E) directly in to the stud.

Note: Do not drive screw all the way in, keep head of screw out about 3/8".



Step 5

If hole location does not align with the stud in wall, install the EZ Anchor(F) by tapping it in to the predrilled pilot hole in the drywall.

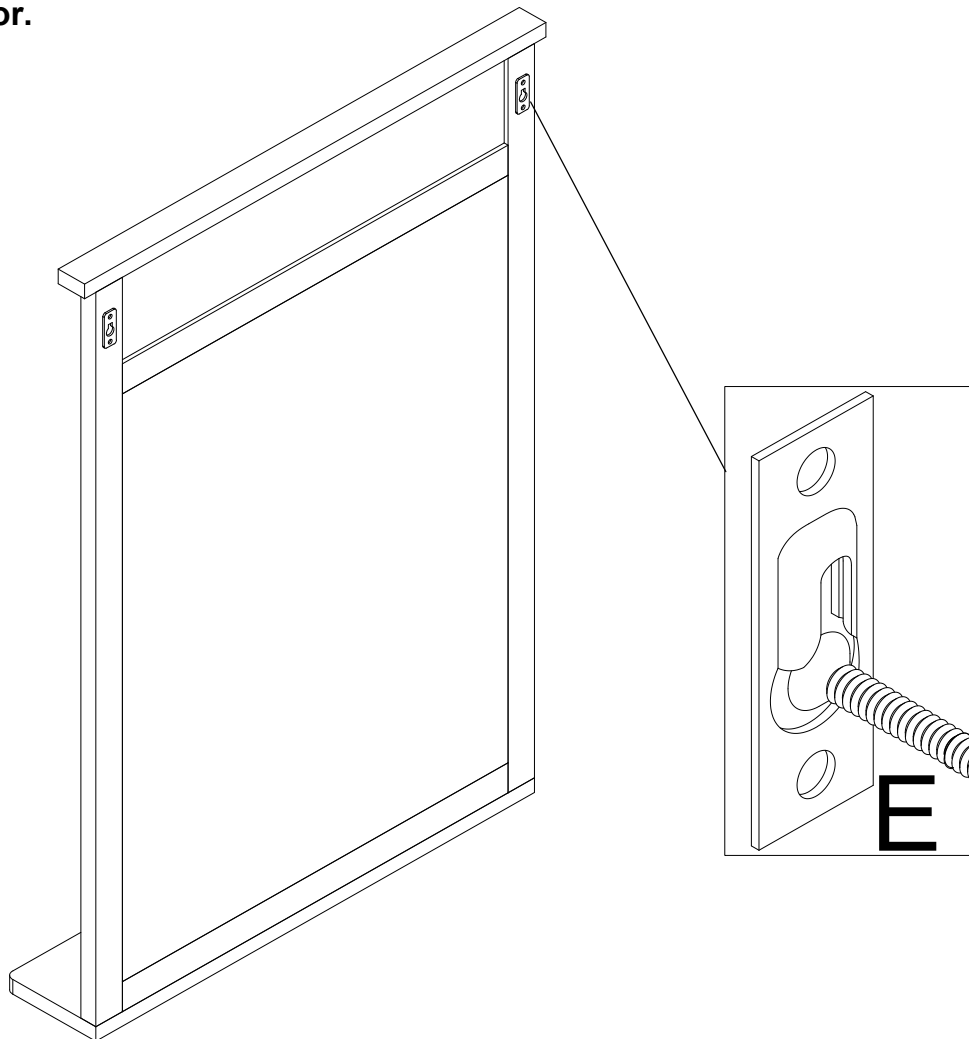


Step 6

Secure screws(E) into EZ Anchor(F)

Step 7

Hang Mirror.



www.boltonfurniture.com